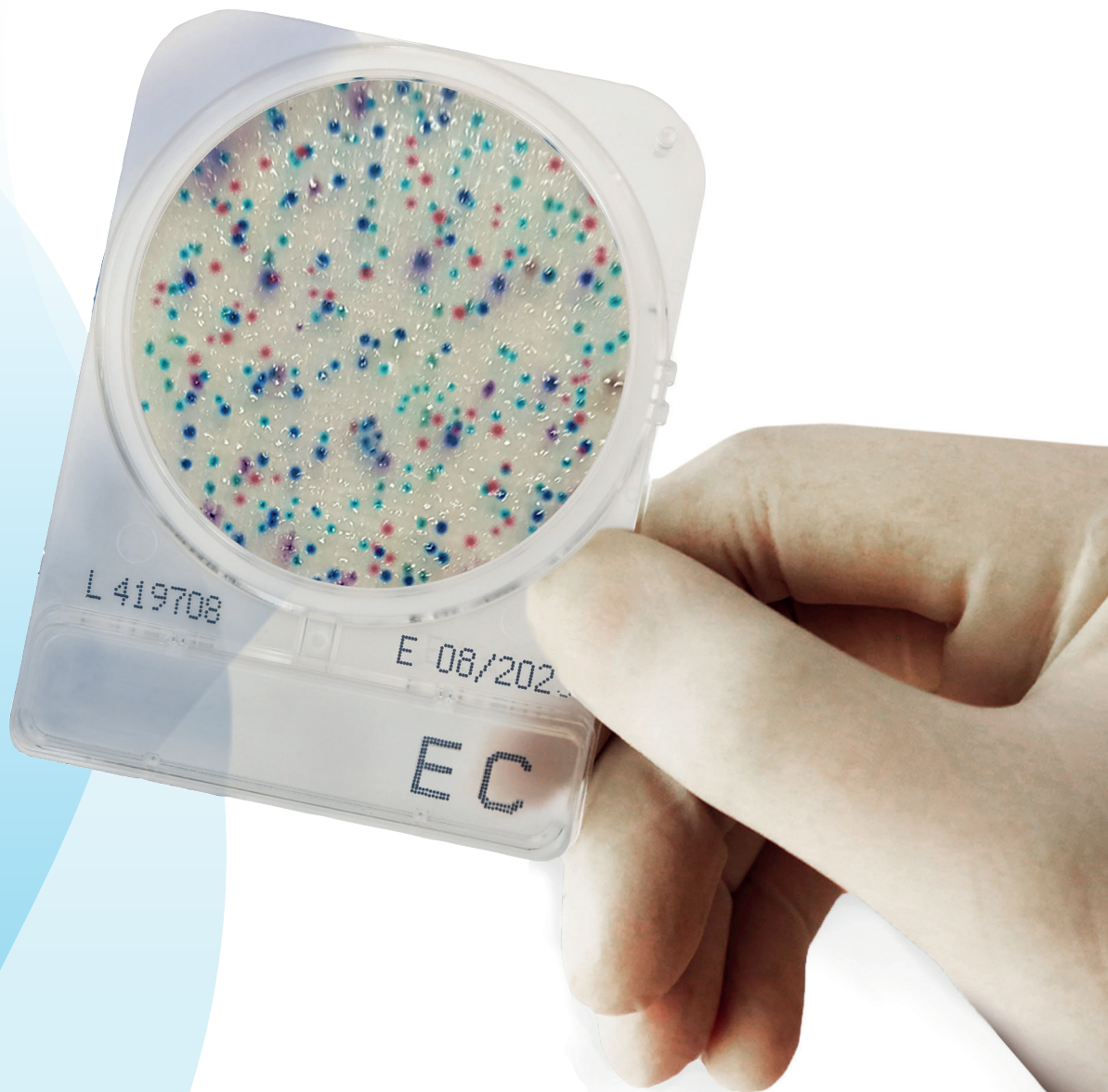


CompactDry for Scharlau



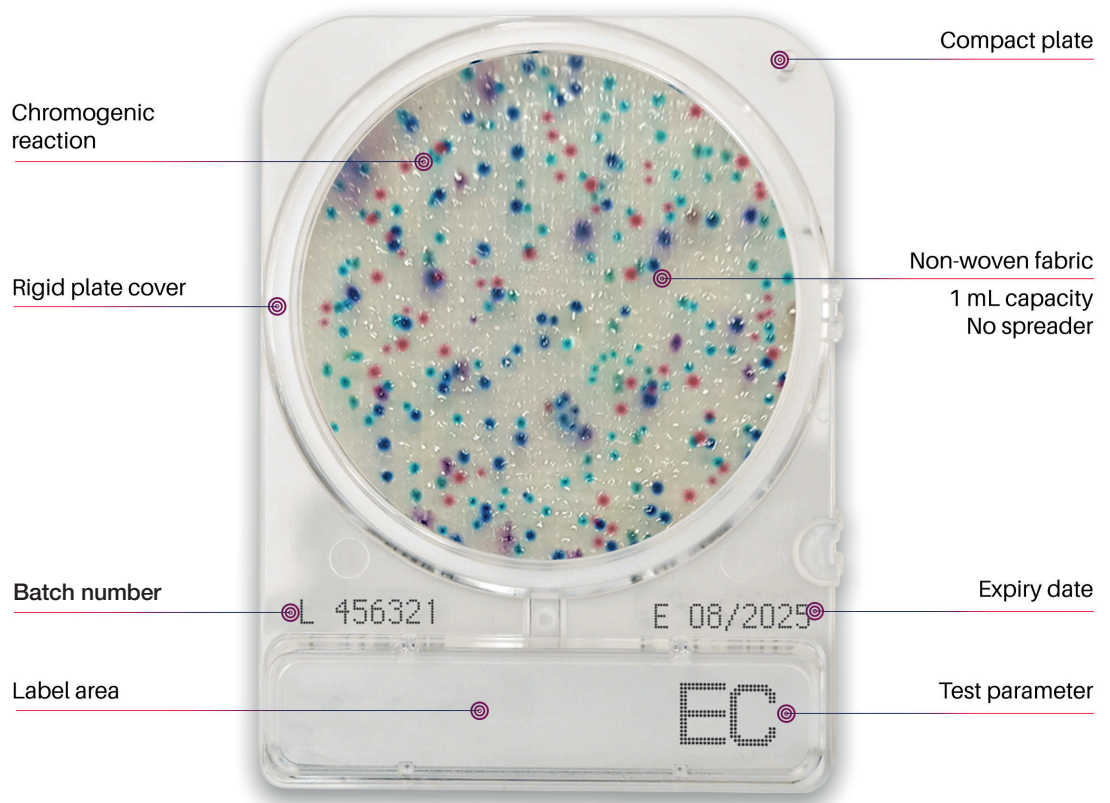
CompactDry: an easy test method to detect and identify microbial contamination

CompactDry - a *ready-to-use* method to minimise microbial testing time and improve quality control processes. Dehydrated, selective and chromogenic media for total count and/or microbial species identification.

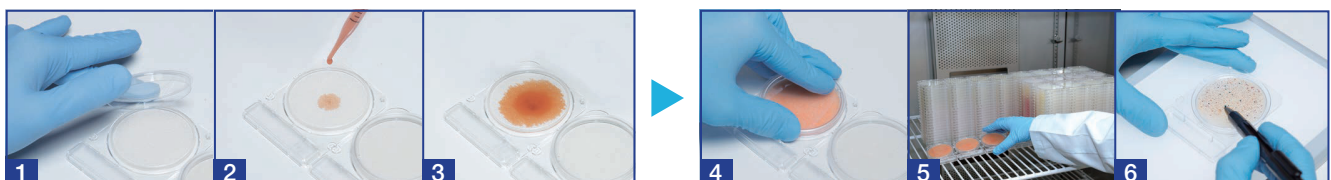
Can be used to test raw materials and processed food products - food, drinks, ready meals, cosmetic and environmental. CompactDry is also used to test surfaces (both food and environmental) using sample swabbing.

CompactDry has a sealed lid to minimise cross-contamination/spillage and a rigid structure to ease handling and **stacking**.

Features



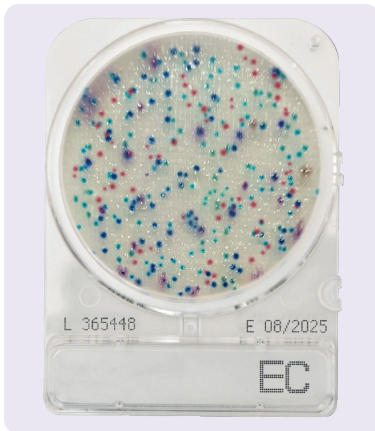
CompactDry: Protocol



- 1** Open the cap.
- 2** Dispense 1 ml of sample in the centre of the CompactDry plate.
- 3** Sample diffuses automatically and evenly across the sheet transforming the dry sheet into a gel within seconds.

- 4** Replace the cap, label and turn the plate over.
- 5** Incubate for the appropriate time and at required temperature.
- 6** Following incubation, count the number of coloured colonies.

CompactDry EC (*E. coli* and coliforms)



CompactDry EC is a medium to detect *E. coli* and coliform bacteria. The medium contains two different chromogenic enzyme substrates: Magenta-Gal and X-Gluc. *E. coli* forms blue colonies. Red and blue colonies counted together provides the total coliform number.

PACKAGES	PRODUCT NUMBER
20 plates	SCD-00EC20
100 plates	SCD-0EC100

Incubation Temperature
35 ± 2 °C (AOAC) 37 ± 1 °C (MicroVal/NordVal)
Incubation Time
24 ± 2 hours
Interpretation
E. coli: Blue / Blue purple colonies Coliform: Total number of both red and blue colonies

● / ●



CompactDry ETB for Enterobacteriaceae



CompactDry ETB is very easy to use system to detect Enterobacteriaceae. Its substrates allows the differentiation of the Enterobacteriaceae from other groups. Enterobacteriaceae are red/purple coloured. Red/purple coloured colonies plus other coloured colonies together form the total gram negative bacteria count.

PACKAGES	PRODUCT NUMBER
20 plates	SCD-0ETB20
100 plates	SCD-ETB100

Incubation Temperature
37 ± 1 °C
Incubation Time
24 ± 2 hours
Interpretation
Red / Red-purple

● / ●



CompactDry LS for Listeria species

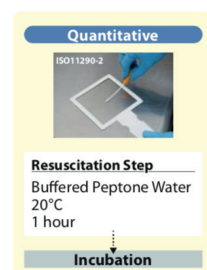
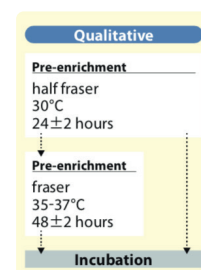


CompactDry LS is used for the quantitative detection of Listeria in food and drinks. Evaluation of surfaces and in working environments using the CompactDry Swab. Detection of Listeria through the combination of selective agents and chromogenic substrates. Listeria species form light blue/blue colonies.

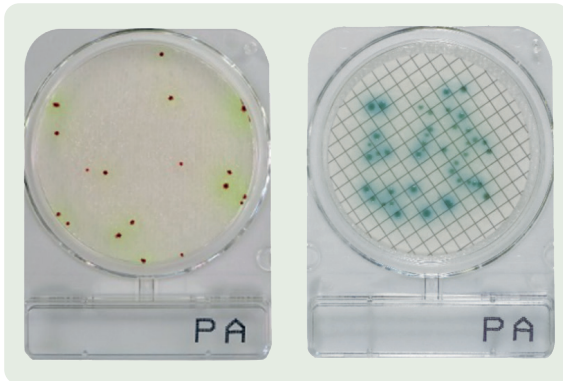
PACKAGES	PRODUCT NUMBER
20 plates	SCD-00LS20
100 plates	SCD-0LS100

Incubation Temperature
35 / 37 ± 2 °C
Incubation Time
24 ± 2 hours plus a further 24 ± 2 hours
Interpretation
Light blue / Blue colonies

● / ●



CompactDry PA for *Pseudomonas aeruginosa*



CompactDry PA for Quantitative detection of *Pseudomonas aeruginosa*. *P. aeruginosa* forms red colonies which are generally surrounded by a greenish-yellow halo.

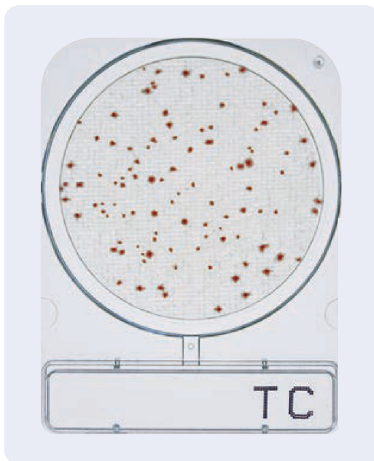
PACKAGES	PRODUCT NUMBER
20 plates	SCD-00PA20
100 plates	SCD-0PA100



Interpretation
Membrane Filter Method
Red colonies surrounded by a greenish-yellow halo
● / ●

Incubation Temperature	34 - 36 °C
Incubation Time	48 ± 3 hours
Interpretation	Red colonies surrounded by a greenish-yellow halo ● / ●
MicroVal	

CompactDry TC (Total Count)



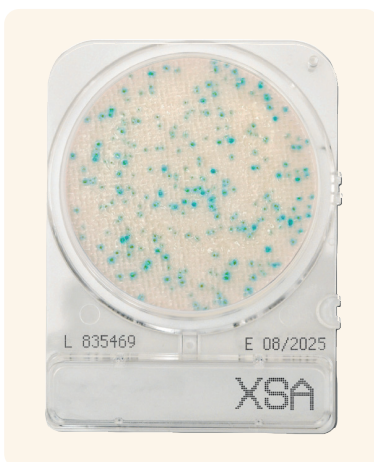
CompactDry TC is a medium for total viable bacterial count, which contains nutrient standard agar. Bacterial colonies are coloured red on CompactDry TC due to the redox indicator tetrazolium salt.

PACKAGES	PRODUCT NUMBER
20 plates	SCD-00TC20
100 plates	SCD-0TC100

Incubation Temperature	35 ± 1 °C (AOAC) 30 ± 1 °C (MicroVal/NordVal)
Incubation Time	48 ± 3 hours
Interpretation	All colonies ● / ○



CompactDry X-SA for *Staphylococcus aureus*



CompactDry X-SA is a medium used to determine *Staphylococcus aureus* by means of selective growth and differentiation.

PACKAGES	PRODUCT NUMBER
20 plates	SCD-0XSA20
100 plates	SCD-XSA100

Incubation Temperature	35 ± 2 °C (AOAC) 37 ± 1 °C (MicroVal/NordVal)
Incubation Time	24 ± 2 hours
Interpretation	Light blue / Blue colonies ● / ●



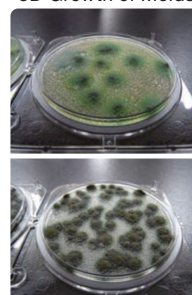
CompactDry YM for yeast and mould



CompactDry YM differentiates yeasts and mould through characteristic colour development and morphology. The medium contains the chromogenic enzyme substrate X-Phos which results in blue yeast colonies. Moulds form “cotton wool” colonies with a characteristic colour. Antibiotics inhibit the growth of bacteria. The CompactDry YM facilitates very good 3-dimension growth of yeast and mould.

PACKAGES	PRODUCT NUMBER
20 plates	SCD-00YM20
100 plates	SCD-0YM100

3D Growth of Molds



Photos Courtesy of
NPO Center for Fungal
Consultation Japan

Incubation Temperature

25 ± 1 °C

Incubation Time

3-7 days

Interpretation

Yeast: Blue or white
to cream colonies
Mold: Cottony colonies
with mold colours

● / ○



**MicroVal
NordVal**

NOTE: There is the Compact Dry YM Rapid version with which faster results can be obtained in 48 to 72 hours of incubation. The procedure for use is simple, safe and allows the determination and quantification of microorganisms in food products, cosmetics and other raw materials, including pharmaceuticals. If you are interested in this product, please contact us.

CompactDry: Ordering information

Product	Product Number	Number of plates	Target	Incubation temperature	Incubation time	Approval
CompactDry EC	SCD-00EC20	20 plates	<i>E. coli</i> and coliform	35 ± 2 °C (AOAC) 37 ± 1 °C (MicroVal/NordVal)	24 ± 2 hours	AOAC/NordVal/MicroVal
	SCD-0EC100	100 plates				
CompactDry ETB	SCD-0ETB20	20 plates	Enterobacteriaceae	37 ± 1 °C	24 ± 2 hours	AOAC/NordVal/MicroVal
	SCD-ETB100	100 plates				
CompactDry LS	SCD-00LS20	20 plates	<i>Listeria</i> spp.	35 - 37 ± 2 °C	24 - 48 hours	-
	SCD-0LS100	100 plates				
CompactDry PA	SCD-00PA20	20 plates	<i>Pseudomonas aeruginosa</i>	34 - 36 °C	48 ± 3 hours	MicroVal
	SCD-0PA100	100 plates				
CompactDry TC	SCD-00TC20	20 plates	Total count	35 ± 1 °C (AOAC) 30 ± 1 °C (MicroVal/NordVal)	48 ± 3 hours	AOAC/NordVal/MicroVal
	SCD-0TC100	100 plates				
CompactDry X-SA	SCD-0XSA20	20 plates	<i>Staphylococcus aureus</i>	35 ± 2 °C (AOAC) 37 ± 1 °C (MicroVal/NordVal)	24 ± 2 hours	AOAC/NordVal/MicroVal
	SCD-XSA100	100 plates				
CompactDry YM	SCD-00YM20	20 plates	Yeast and mould	25 ± 1 °C	3 - 7 days	AOAC/NordVal/MicroVal
	SCD-0YM100	100 plates				



CompactDry® TC (Total Viable Count)
 CompactDry® EC (*E.coli* / Coliforms)
 CompactDry® ECO (*E.coli*)

CompactDry® CF (Coliforms)
 CompactDry® YM (Yeast / Mold)
 CompactDry® YMR (Yeast / Mold)

 **SHIMADZU** Shimadzu Diagnostics Europe
 Excellence in Science

 Shimadzu Diagnostics Corporation

Scharlab S.L.
 Gato Pérez, 33. Pol. Ind. Mas d'en Cisa.
 08181 Sentmenat, Barcelona, Spain
 Tel.: +34 93 715 19 40 - Fax: +34 93 715 27 65
 E-mail: helpdesk@scharlab.com

Scharlab Italia S.r.l.
 Via Massimo D'Azeglio 20
 26900 LODI (LO)
 Tel.: +39 02 9823 0679
 E-mail: customerservice@scharlab.it

Scharlab Philippines, Inc.
 4/F Unit K, No. 35 Sto. Niño Street corner Roosevelt Ave.
 Barangay San Antonio, Quezon City 1105, Philippines.
 Tel. - Fax: + 63 2 529 5726
 E-mail: infophilippines@scharlab.ph



Internal use

Visit our website:



F-CODRY023